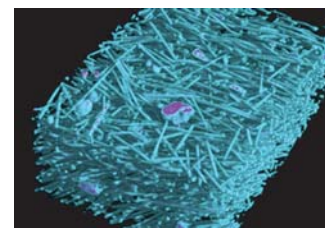
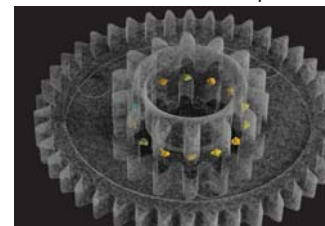


v|tome|x s – versatile and flexible CT system

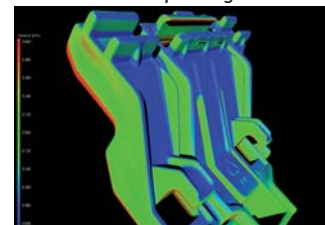
The v|tome|x s is a versatile high resolution system for 2D x-ray inspection and 3D failure- and structure analysis as well as for 3D metrology. To allow high flexibility, the v|tome|x s may optionally be equipped with both, a 180 kV / 15 W high-power nanofocus X-ray tube and a 240 kV / 320 W microfocus tube. Due to this unique combination, the system is an ideal tool for a wide range of applications from extreme high resolution scans of low absorbing materials as well as for 3D analysis of high absorbing objects up to 260 mm in diameter. To ensure the high quality of the reconstructed volume, phoenix|x-ray has developed a variety of effective software, e.g. for automatic beam-hardening correction. Innovative modules for automatic geometry calibration, or ROI-CT support the ease of use.



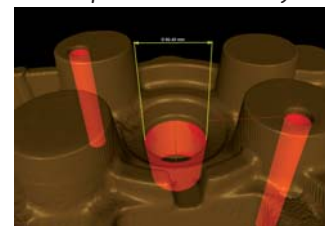
Glass fibre reinforced plastic



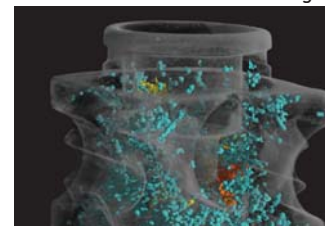
Cavities in a plastic gear wheel



Micropart CAD variance analysis



3D measurements in an Al casting



Cavities in an Al casting

- ▶ Unique nanofocus-microfocus dual tube combination
- ▶ Maximum voxel resolution <math><2\ \mu\text{m}</math> (3D)
- ▶ nanoCT® configuration for voxel resolution <math><1\ \mu\text{m}</math> (3D)
- ▶ Maximum sample size 420 mm in height x 260 mm in diameter
- ▶ Maximum sample weight 10 kg
- ▶ Fast CT acquisition by high dynamic temperature-stabilized detector
- ▶ 240 kV / 320 W max. tube power
- ▶ Longlife open X-ray tubes
- ▶ Metrology package for dimensional measuring with extreme high precision
- ▶ Automated generation of first article inspection reports in <math><1</math> hour possible
- ▶ Excellent software modules for highest CT quality and ease of use
- ▶ Accelerated 3D reconstruction results within a few minutes by velo|CT



GE imagination at work

GE Sensing & Inspection
Technologies GmbH
phoenix|x-ray
Niels-Bohr-Str. 7
D-31515 Wunstorf | Germany
Tel.: +49 5031.172-0
Fax.: +49 5031.172-299
phoenix-info@ge.com

Further offices:
phoenix-stuttgart@ge.com
phoenix-muenchen@ge.com
phoenix-france@ge.com
phoenix-asia@ge.com
phoenix-usa@ge.com

www.phoenix-xray.com