

# Scratchview

The optical system for scratch analysis

## scratchview

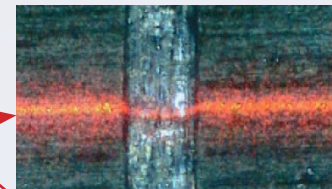
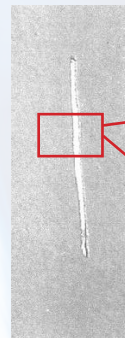
**A unique technology for the accurate measurement of the depth and the width of a scratch**



- ➔ The Scratchview is directly used on-site
- ➔ The easiest way to measure scratches

- ➔ Ergonomic : only 4 control buttons – perfect fit and comfort.
- ➔ Autonomous, wireless, light weight : for any kind of inspection
- ➔ Easy : fast handling – very short training only then immediate use – no preliminary adjustment.
- ➔ Scratch depth and width are automatically calculated within a few seconds – no extra computer necessary
- ➔ Reliable, repeatable and operator independent
- ➔ Safe : laser class 2, compatible with mass market regulations
- ➔ Low cost : inexpensive at purchase and in operation

Accuracy : 5  $\mu$ m



Principle : laser triangulation



### Measurement range :

- 0.02 mm < Depth < 1 mm
- For 0.02 mm < Depth < 0.05 mm, accuracy =  $\pm 0.005$  mm
- For 0.05 mm < Depth < 1 mm, accuracy =  $\pm 10\%$
- 0.03 mm < Width < 2 mm

Weight : 1.7 kg

External USB port for data saving and reporting

Autonomy : typically 6 h at 25°C

➔ For wider measurement range or for gap & flush applications, the dedicated tool is : **lineview**